

TOWNSEND  
CHURCH OF ENGLAND SCHOOL

# Prospectus

📍 [townsend.herts.sch.uk](https://townsend.herts.sch.uk)

📘 [@townsend.cofe.school](https://townsend.cofe.school)

✉ [@Townsend\\_School](https://twitter.com/Townsend_School)



**“Students develop spiritually during their time at Townsend into reflective and compassionate young adults. The school’s culture gives them the capacity and the drive to change their school and community for the better”**

**SIAMS**



# Contents

04	Welcome
06	Vision and Values
09	Church of England Ethos
10	Our History
12	Meet our Students
16	Academic and Curriculum
18	Enrichment and Co-Curricular
21	Pastoral Care
22	Y6 to 7 Transition and the School Day
26	Sixth Form and Destinations
27	Getting Here

# Welcome

**At Townsend Church of England School, we are committed to delivering the best possible education for our students. We deliver high-quality teaching and learning and pastoral care, utilising the latest technology, to create compassionate young adults who will go on to make a significant difference to their local community and the wider world.**

Families of all faiths and of no faith are welcome at Townsend. Our Bible-based vision of 'Love Your Neighbour', from the parable of The Good Samaritan (Luke 10: 25-37) underpins everything we do in forming our inclusive and caring ethos.

We provide a safe and calm learning environment where every person matters, where no child is left behind and where every child has the opportunity to succeed. We are committed to ensuring that the learner is at the heart of everything we do. All students are encouraged to have high aspirations and to follow an ambitious school curriculum.

Students at Townsend are wonderful ambassadors for our school – hard working, enthusiastic, fun to be with and genuinely impressive young people. We have high expectations of them all and we aim to develop confident, resilient and independent learners who enjoy their time at school. We want them to thrive within our school community.

We were delighted to be inspected by Ofsted and SIAMS in January and May 2024, respectively. Please read our full reports, which are on our website. Ofsted reported that 'all are made to feel safe, welcomed, and valued', and 'classrooms are positive places in which to teach and learn.' SIAMS reported that 'students grow during their time in school into reflective and compassionate young adults. This is a result of the school vision's focus on the importance of respectful relationships.'

I am privileged to lead a dedicated team of teachers and support staff who value the many and varied achievements of all students, including

academic and wider successes. We recognise that everyone learns differently and that making mistakes and taking risks are both integral parts of the learning experience. I am extremely proud to be the Headteacher at Townsend Church of England School.

Townsend is on a fabulous journey, embracing changes that will enhance the educational experience and enable all to flourish. Our inspections of 2024 provide validation that we are on the right path, an excellent school aspiring to be the first choice secondary school for all.



*Anthony Flack*

**Anthony Flack**  
Headteacher

# Vision & Values

## | Respect For All

**Townsend School seeks to provide an education of the highest quality.**

Our 'Respect for All' policy, written by students and staff affirms our commitment to each member of our community as an individual and underpins all aspects of our school life. 'Respect for All' is prominently displayed at Townsend and is core to the school's ethos. It expresses Townsend's strong commitment to equal opportunities, to life in modern Britain and the world that we live in. Each child is valued as an individual and encouraged to take an active part in all aspects of school life.

At Townsend, we believe that every person is equally important and that no one has a right to harass, insult or cause offence to any other person for any reason. We particularly reject the way that some people abuse others:

- because they are richer or poorer, older or younger,
- because they are small or tall, thin or fat,
- because of the colour of their skin,
- because they are a teacher or a pupil,
- because of their religion or beliefs,
- because of disability or personal problems,

- because of gender or sexual orientation,
- because of their looks or what they wear,
- because of their likes and dislikes,
- because they are popular or unpopular,
- because of their ability or lack of ability,
- because of their nationality or accent.

We are all individuals with differences, but we are all members of Townsend and can learn from each other.

## | Achievement For All

**Townsend School is committed to providing an education of the highest quality, with a strong emphasis on academic excellence.**

Our rigorous and challenging curriculum is designed to foster critical thinking, creativity, and a passion for learning, ensuring each student achieves their full potential. Our 'Respect for All' ethos is reflected in our curriculum with a desire for everyone to be able to succeed. We are dedicated to equal opportunities and preparing students for life in modern Britain and the wider world. Our supportive Christian

ethos, combined with academic rigor, ensures our students leave as well-rounded individuals and good citizens, equipped with lifelong values and many opportunities for the future. We ensure that the curriculum is engaging and rich, and that students have opportunities to learn the key knowledge, concepts and values needed to drive them at each stage of a progressive and aspirational learning journey.

Our curriculum offers students a broad and balanced experience which empowers them for a complex and ever-changing world. This is planned to meet the needs of

the individual, combat social disadvantage and prepare them for the challenges of life-long learning.

High expectations supported by excellent resources and expert teaching from qualified, professional staff ensure that all students have the opportunity to succeed. Rigorous monitoring and assessment takes account of students' different aptitudes and interests and enables all to achieve to the very best of their ability.



“

**“The school’s Christian vision has been carefully crafted and updated to address the particular needs of its diverse and vibrant student body. The outworking of the vision results in a palpable sense of belonging in the Townsend community.”**

**SIAMS**



# Church of England Ethos

**Young people of all faiths and with no faith are welcome at Townsend Church of England School. You do not have to go to church to come here, however, you will need to be in sympathy with our ethos and traditions. The Christian virtues of faith, hope and love underpin the life of the school and can be seen in the way we speak, listen, interact and resolve situations, and can be evidenced in the day-to-day life of the school.**

At Townsend, the concept of 'Love Your Neighbour', from the parable of the Good Samaritan (Luke 10:25-37), has three strands. Together with Love Your Neighbour, we also teach how this helps us to Love ourselves and Love the journey. We value everyone and show love and

respect for ourselves and others, setting high standards on our journey through Townsend. There is an emphasis on worship and celebration. There is a time during every day for an act of collective worship, either in form groups, year groups, or multi-year group gatherings.

This school has a long association with St Albans Cathedral and Abbey Church and there are four annual services held in the Cathedral that all students attend. There are also voluntary opportunities during each term for students to attend Holy Communion services if they want to and there are other worship activities held in school. A faith youth group for those interested meets regularly to worship and pray together in a friendly and informal atmosphere.

Our Christian beliefs form the cornerstone of everything we do. We aim to stimulate lively, enquiring minds as students examine the development of religious belief and think about moral and ethical questions. Our 'Respect For All' ethos, fundraising for charity, and voluntary services to the community are examples of the practical opportunities our students have to live out Christian values.

Religious Studies is an important part of our curriculum. An academic subject in its own right, it is also an integral part of each student's day, helping them to explore their understanding of God and to reflect on their relationship with him, each other and the world they live in. All students have lessons in Religious Studies to examination level.

# Our History

## 1930

Dean Henderson's vision in 1930 was for a Church School for girls and one for boys. The Churches involved were St. Michaels, Christ Church in Verulam Road, The Abbey and St. Saviours. The chosen site in Townsend Drive was inspected and the raising of funds began.

## 1932

The Foundation Stone was laid in 1932 and the building began. Miss Rollin was the first Headteacher of the Girls' School and Mr. Watson was the Headteacher of the Boys' School.

## 1953

Miss Rowland took over as Head of the Girls' School in 1953. Her enthusiasm,

planning and endeavour led to the new building at High Oaks. The foundation Stone for the new building was laid in September 1963 and the opening of Townsend Girls' School took place in June 1965.

## 1974

In September 1974 Miss Legerton, became Head of the merged school. The official opening of the Townsend Church of England School at the High Oaks site, was performed by the Dowager Duchess of Gloucester in May 1975. The Original 'Foundation Stones' from the previous school sites, can be found in the "Founders Entrance".

## 1983

September 1983 marked the 50th Anniversary celebrations of the establishment of the first Townsend School.

## 1993

September 1993 marked the 60th Anniversary celebrations. The occasion was marked with reunions, a charity walk and a whole school photograph. Mr Wellbeloved was appointed as Headteacher in 1995.

## 1996

In September 1996 a new building housing the Learning Resources Centre, Sixth Form Study room and five English classrooms opened and several classrooms converted for the specialist use of the Heathlands hearing impaired pupils.

## 2012

In 2012, two major projects took place. The creation of a dedicated Sixth Form Centre, which includes a Study Room, Common Room and three Lecture Rooms, and the redevelopment and refurbishment of the Technology Centre.

## 2015

St Albans Music School relocated to Townsend with the school opening 12 dedicated practice rooms.

## 2019

A Dance Studio was created opposite the Gym and the changing rooms were designed to provide additional indoors spaces for Physical Education.

## 2021

A Multi-Use Games Area (Astroturf MUGA) was built at the back of the school, close to the existing outdoor changing rooms on the large school field.

## 2023

Mr Flack was appointed as Headteacher.

## 2024

Townsend embraced teaching & learning innovation and technology by introducing iPad devices for all staff and students to complement the new Key Stage 3 and 5 curriculums. A number of classrooms were updated into modern learning spaces.

## 2025

The official opening of the school Chapel and multi-faith worship space took place in May, with the service led by Bishop Alan of St Albans and dedicated to previous Headteacher, Mr Wellbeloved, who sadly passed away the previous year.

Townsend also celebrated 50 years at High Oaks site with a week-long of celebration, including a giant human 50, consisting of all the students.

# Meet Our Students



**Daniella**

Year 13



Having joined Townsend in year 7 from Maple Grove Primary School, I've had the wonderful opportunity to grow in an environment that is both supportive and inspiring. From the moment I arrived, transition from primary to secondary felt both smooth and reassuring.

The teachers and staff have supported me throughout my journey, from a quiet year 7 student to the confident and independent sixth former I am now. As a sixth former, the school has helped me find the perfect balance between my responsibilities as Head Student and studying four A Levels (History, Sociology, Politics and Core Maths)

As I begin my final year, I can say with certainty that I wouldn't be the person I am now without the care, encouragement, and sense of belonging I've found at Townsend. I feel incredibly fortunate to be part of such a wonderful school.



# Jewel

Year 11



“

**I moved to the UK at the start of Year 7 at Townsend. I was overwhelmed when thinking about what school life would be like.**

My first day of school didn't even feel like a whole day because of how welcoming the teachers and my classmates were. The older years were really kind to help me get to my lessons if I was lost or was not sure where to go. I love how there is such a variety of lessons and creative teachers who support you to be your best. Our canteen has the tastiest food and I look forward to lunch every day. I have been fortunate to be involved in some whole school projects like the Eco-Committee and Charity Representative. All the staff work really hard to give all students every opportunity to make the most of their time at Townsend. My advice would be to get involved in as many clubs and activities as you can.



# Meet Our Students



**Danny**

Year 9



**I joined Townsend School from Bedmond Academy, along with my best friend, and I've loved it here from day one.**

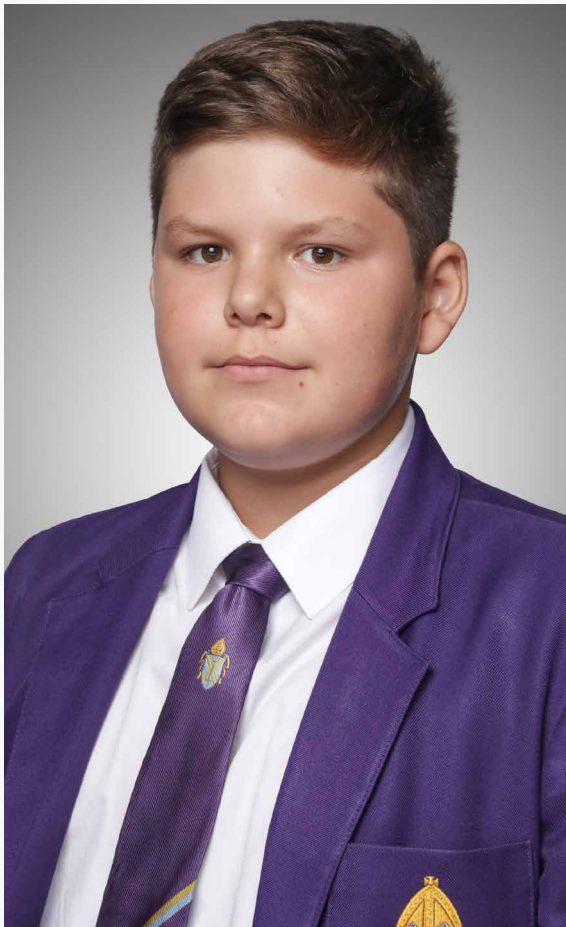
Every day is different and exciting – I really enjoy my learning and feel encouraged to try my best in everything I do. I've become involved in all sorts of activities, especially sports.

Outside of school, I train with Costa Swimming Club in St Albans several times a week. It's something I'm really passionate about and I'm proud to represent both my swimming club and Townsend School in competitions. Swimming has taught me a lot about discipline, teamwork and setting goals. I bring those lessons into school life too. Being part of Townsend means being part of a community where everyone's talents are valued, and I'm proud to be here.



# Dimitris

Year 10



**My primary school was Parkside Community Primary School in Borehamwood.**

Three other people from my school came to Townsend. From transition day, I was able to talk with new people and make friends with people from places in Hertfordshire and Bedfordshire. Even the older years came and talked to me to help me get settled in. Everyone was very respectful, and gave us time to settle in.

My favourite thing about Townsend is that everyone is so nice and friendly here. From the first day you experience new things, like Food Technology and Design Technology, and get help when you get stuck in any subject or situation. I am a Christian and I am also very friendly. If you need help, then I might be able to come and help you.

# Academic & Curriculum

**At the heart of our curriculum is an unwavering belief that all children, irrespective of their background or starting points, deserve a broad and ambitious range of subject experiences. This enables students to be successful and fully prepared for their next step - be that university, employment, or apprenticeship.**

During the academic year 2024–25 we rolled out the use of 1:1 devices (iPads) across the whole school. They are already proving a huge success as they have supported the developments we have made to the curriculum and are preparing our students for life beyond Townsend, equipping them with skills employers are seeking.

Through every subject, we promote social responsibility, community and British Values. This work is enhanced by our personal, social, health and education (PSHE) enrichment days, which support students to become responsible, thoughtful and courageous global citizens who themselves promote inclusivity, love and integrity.

Our curriculum is complemented by an enrichment experience which engages, enthuses and inspires our students. The offer of enrichment activities is also central to our commitment to support the mental health and wellbeing of all members of our community. With exciting opportunities to promote self-belief such as the Duke of Edinburgh award, students learn

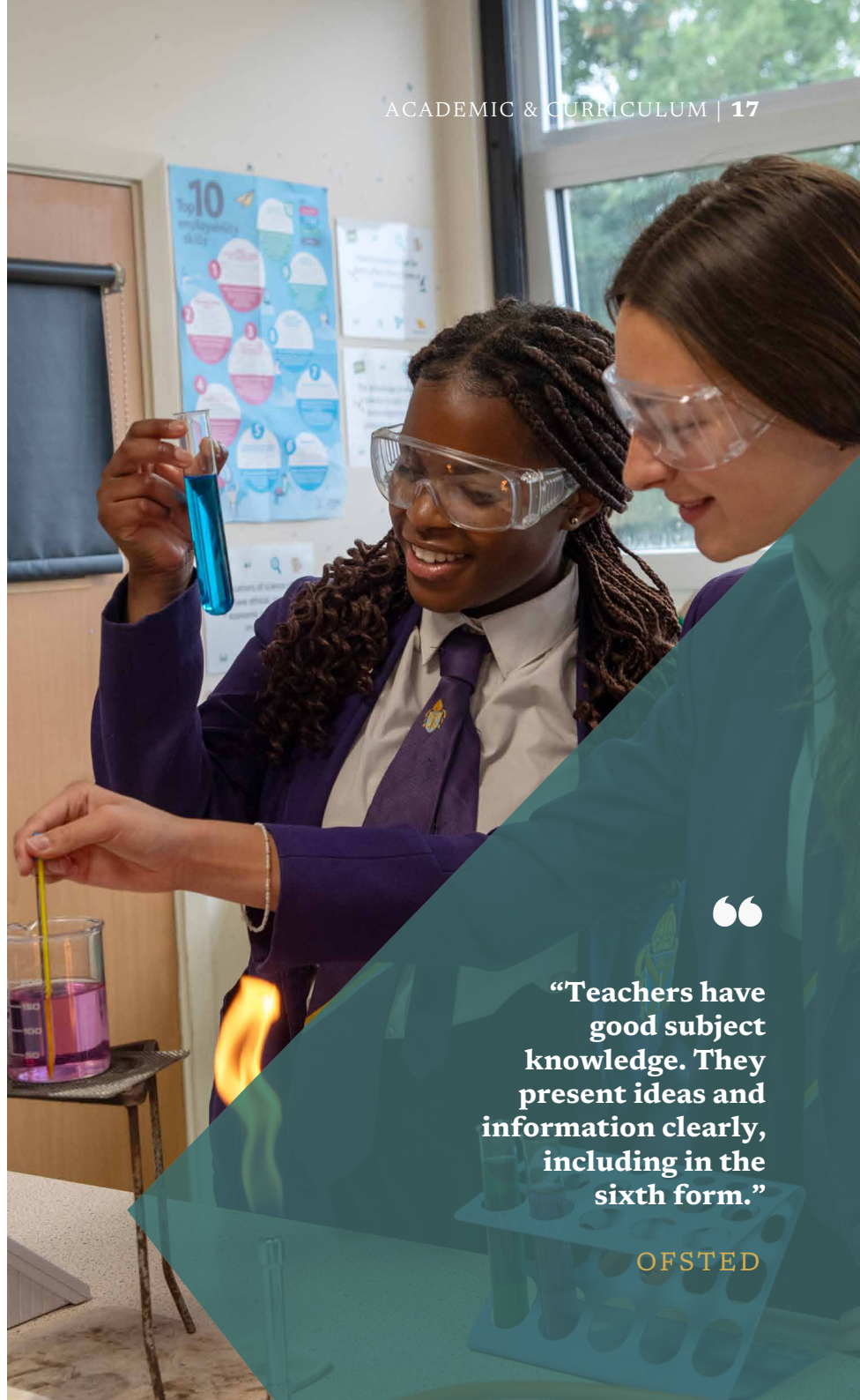
new skills and develop interests beyond the curriculum.

In Key Stage 3, students are taught a wide range of subjects. Subject curricular are designed to build on students' prior learning, and to strengthen their knowledge, memory and skills. At Key Stage 4, students continue with PSHE, alongside the other core subjects of English, Maths, Science, RS and PE. Students can then choose from all subjects on offer, and we aim to deliver as many first-choice options as possible.

In Sixth Form, students have a large range of subjects to choose from. Recent additions include; Criminology, Fashion & Textiles, Film & TV and Government & Politics which increase the breadth of subjects

offered to over 20. The Sixth Form area on our website has a full list of courses on offer and information about life in the Sixth Form at Townsend.

Careers Education for all year groups is firmly embedded in the Enrichment Programme and woven into subject lessons and Year assemblies, with events for subject-specific careers and Work Experience provided in Years 10 and 12, and a Work Shadowing Day in Year 7.



“

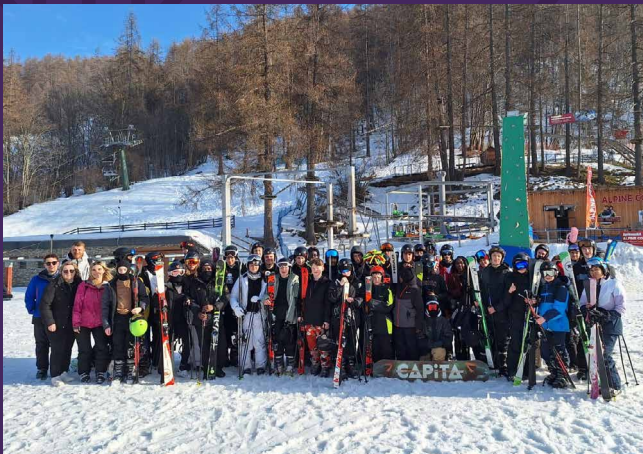
**“Teachers have good subject knowledge. They present ideas and information clearly, including in the sixth form.”**

OFSTED

# Enrichment & Co-Curricular

**At Townsend, we strongly believe that co-curricular activities are an essential aspect of school life and we provide something for all interests.**

**We have a 3-tier approach to enrichment at Townsend:**



## Enrichment Clubs

Enrichment clubs (lunchtime and after school clubs) These include: Athletics, Book clubs, Basketball, Brass Band, Chess, Creative Writing, Cricket, Coding, Eco club, LGBTQ+, Swimming, Debating, Concert Band, Science club, Dance, Drama, Duke of Edinburgh Award Scheme, Rock School, Football, African Drumming, Language clubs, Netball, Rounders, Rugby, Table Tennis, Technology Workshops, Tennis, Trampolining and much more!

## Enrichment Afternoons

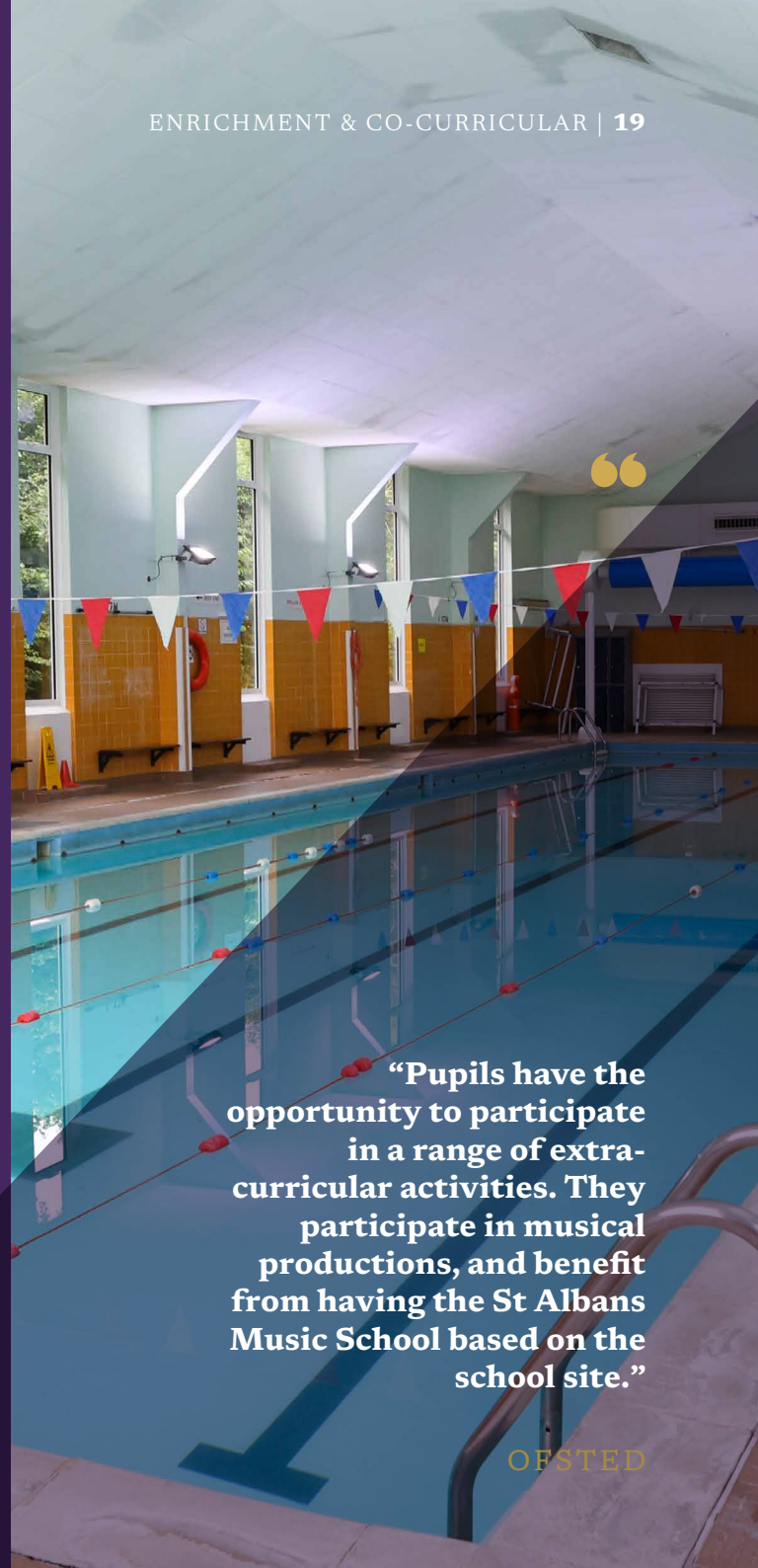
Whole school Curriculum Enrichment afternoons. The topics change each year, and we have recently used the following themes: The Great Debate, Careers, RSE, Spiritual Reflection, GCSE taster sessions, Dragons Den, Business Conferences and Personal Excellence.



## Trips and Visits

Previous trips and visits include: Field trips to Swanage, Dartmoor, St Albans, local rivers. Trips abroad to places such as New York, Berlin, Iceland, Auschwitz and Boulogne-Sur-Mer. Workshops for subjects such as Maths, English, Science and Drama GCSE and A-level. Biology field trips to North Yorkshire. Art galleries and museums like the Imperial War Museum and the National Gallery. The Houses of Parliament, Food Technology and Business Studies trips to Cadbury's World and Jimmy's Farm, to name just a few.

Enrichment and next-steps visits include trips to the theatre and plays, museums, university open days and visits to the University of Oxford for the scholars' programme. Trips for careers, The Apprenticeship Show, Morfa Bay, and Harry Potter World. Activities Day in July – the whole school attends a trip/visit/onsite enrichment activity. Examples include: Chessington Park and Zoo, Alton Towers, footgolf, Whipsnade Zoo, Blenheim Palace, Lea Valley Water sports trips, and Southend.



**“Pupils have the opportunity to participate in a range of extra-curricular activities. They participate in musical productions, and benefit from having the St Albans Music School based on the school site.”**

OFSTED

“

“People from all backgrounds, beliefs and lifestyles can be themselves and thrive at Townsend. Pupils are happy to be at school and make good friendships.”

OFSTED



# Pastoral Care

**Townsend Church of England School is deeply committed to making a positive difference in the lives of young people. We believe that personal growth and learning are best nurtured through a holistic approach—one that involves collaboration across the whole staff team, engagement with external agencies, partnership with the wider community, and, most importantly, active involvement with the young people at the heart of our school.**

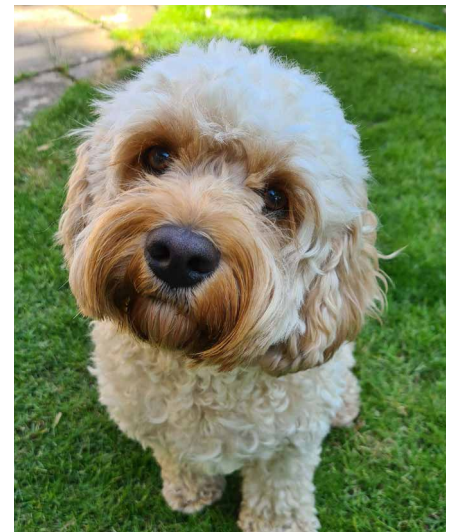
We act with determination to proactively support and encourage our students, to improve their life chances. These are a reflection of our curriculum intent, core values and our Biblical vision of 'Love Your Neighbour'.

We value everyone and believe in showing love for others and ourselves. We are committed to making a difference; we are not passive players in young people's lives but active participants who can, and do, make a real difference. This mirrors our school's curriculum intent and embodies our Biblical vision: Love Your Neighbour, love yourself, and love the journey.

The wellbeing of all students is something we take very seriously at Townsend Church of England School. We have a Wellbeing Team who are available to see students who may be going through a challenging time. We also work closely with a number of external professionals who we use to support students when there is a specific need.

All Townsend staff have a role to play in safeguarding our young people. We regularly run staff safeguarding training, which includes updates on new policies and procedures, as well as an overview of current contextual issues.

Bruno, the school dog, joined us in September 2023 and is here to support the wellbeing of students and staff.



# Year 6-7 Transition

**Each year we look forward to welcoming new students and their families to our school community. Townsend provides a place for students from numerous primary schools across Hertfordshire, Bedfordshire and beyond. We aim to make every student feel welcome and confident about their transition to us.**

As part of our school community, each child will grow and develop a range of knowledge and skills. There will be a focus on our core values of Awe and Wonder, Hope, Love, Respect, Stewardship and Wisdom. At Townsend, we uphold the highest standards, with clear expectations regarding manners and behaviour.

We work closely to ensure every student is given the best possible start to ensure they thrive whilst

in secondary education and they are ready for the future. The school is a deeply caring and loving environment where each child is safe and encouraged to develop their own personality. By joining us in Year 7, every child will become a part of the Townsend community.

Our Year 7 team specialises in supporting students in their transition to secondary school and helps them to integrate into Townsend life. Being a specialist team means we recognise the small worries, concerns and uncertainties that new students and their families can face, and therefore can offer the best support.

We work closely with primary schools to build relationships and collate key information. This knowledge helps us to gain a

clear, in-depth understanding of their needs, ability and progress to ensure they have a smooth start. We aim to find out as much as we can about their hopes, dreams and fears before starting secondary school.

As part of the Townsend transition programme, every child is invited to an induction day in July. The day provides an opportunity for students to meet their peers and the Year 7 team, explore the school grounds, and enjoy multiple taster lessons in different curriculum areas.

As part of the programme, we hold an introduction evening for parents and carers. The event will introduce the school, the team and provide all information needed for their start. We have tailored programmes for particularly anxious or concerned

students, who may require additional support with their transition to secondary school. This will involve friendly meetings, extra tours and additional visits to us. We also run an action-packed summer school for three days in August for all students joining our Year 7 in September.





“

**“Pupils benefit from knowledgeable teaching and the school’s ethos of respecting everyone is clearly lived out in the way that staff and pupils behave.”**

**OFSTED**

# Our School Day

08:00 – 08:45	Breakfast Club
08:45 – 08:55	Registration
08:55 – 09:55	Lesson 1
09:55 – 10:55	Lesson 2
10:55 – 11:15	Break time
11:15 – 12:15	Lesson 3
12:15 – 13:15	Lesson 4
13:15 – 13:55	Lunchtime / Clubs
14.00 – 14:25	Registration / Tutor Period / Assembly / Collective Worship
14:25 – 15:25	Lesson 5
15:25	End of School / Meetings / Clubs

# Sixth Form & Destinations

Our aim is to provide students with a first-class learning experience. We are proud to offer a wide range of A level and vocational qualifications, a broad selection of co-curricular opportunities alongside the care and guidance to enable students thrive and achieve their goals.

Our students benefit from the use of a dedicated Sixth Form Centre. This separate wing of the school has been designed to provide Sixth Form students with the best possible working environment. A study room equipped with desktop computers as well as wireless internet access provides a comfortable work space where they can study independently. This is complemented by a suite of classrooms and smaller

meeting rooms exclusively for Sixth Form students. The large Sixth Form common room with soft seating and a kitchen area provides the perfect space to gather during lunchtime.

Some students will have the opportunity to study courses at one or more of the Alban Learning Partner consortium centres. This is to help students study their chosen courses. Throughout the year we will visit our consortium schools to ensure students are achieving well.

From year to year students' destinations vary, however, all our students receive the necessary support to find a destination which suits them best. The majority go on to university, and

the list below reflects the typical range of subjects they pursue: Law, Medical Science, Ancient History, Biology, Aerospace Engineering, English Literature, Physics with Medical Physics, Primary Education, Sport, Psychology.

An increasing number are choosing the apprenticeship or combined degree apprenticeship routes. Some students ready to enter the workplace find appropriate employment opportunities.

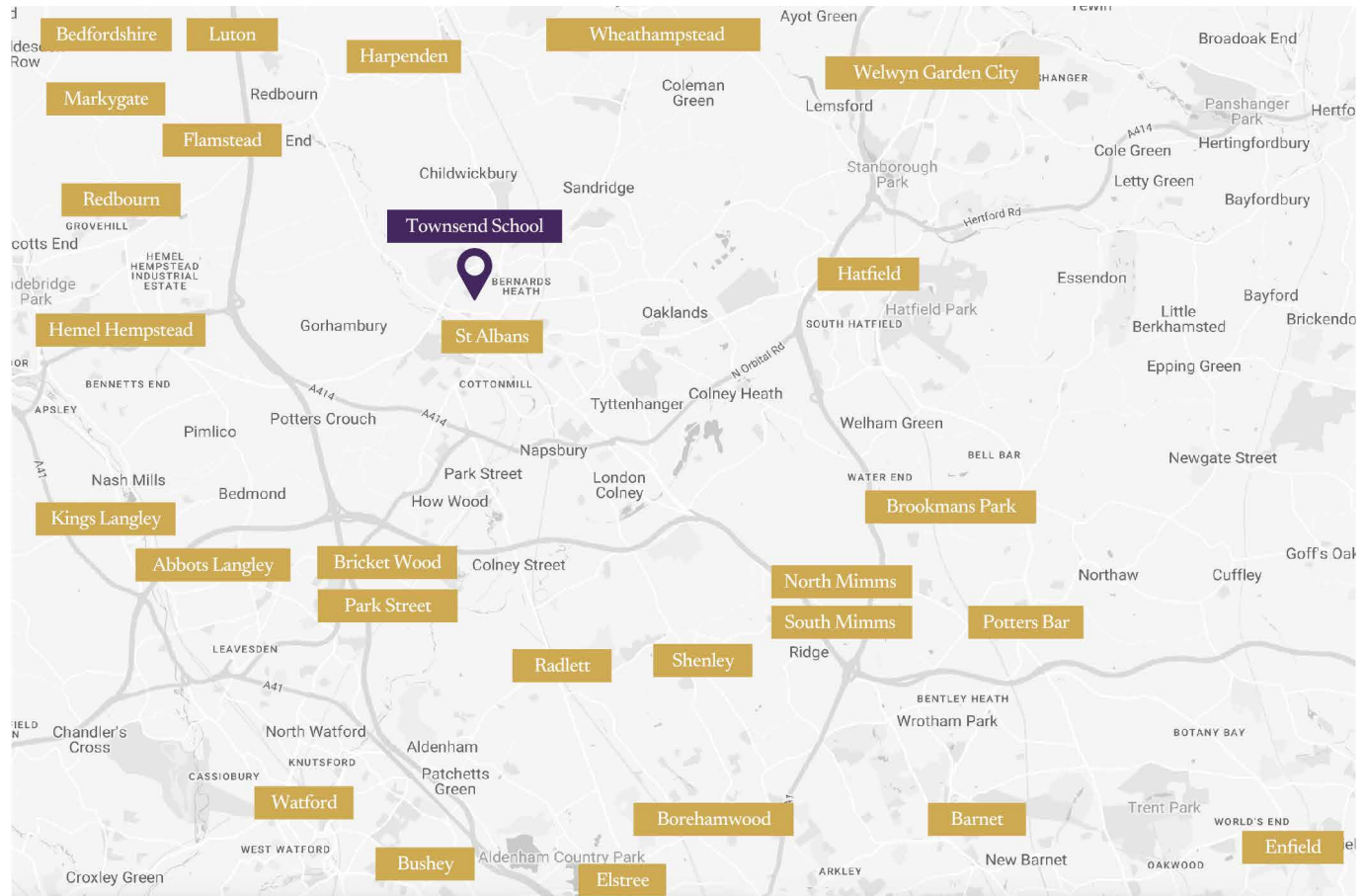
“

**“Sixth-form students are excellent ambassadors for the school.”**

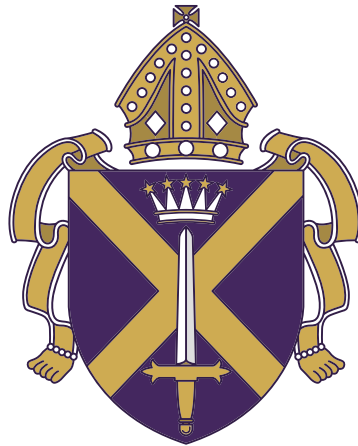
OFSTED

# Getting Here

Traditionally students come to Townsend from a very wide area - including from in and around all the areas show on this map! For more information about transport routes, please contact [admin@townsend.herts.sch.uk](mailto:admin@townsend.herts.sch.uk).







# TOWNSEND

CHURCH OF ENGLAND SCHOOL

High Oaks  
St Albans  
Hertfordshire  
AL3 6DR  
Telephone 01727 853047

Email for admissions: [admin@townsend.herts.sch.uk](mailto:admin@townsend.herts.sch.uk)